



rim

Social distancing goes smart

Narendra Chakraborty
Indian Institute of Information Technology,
Design & Manufacturing , Jabalpur

Area of intervention

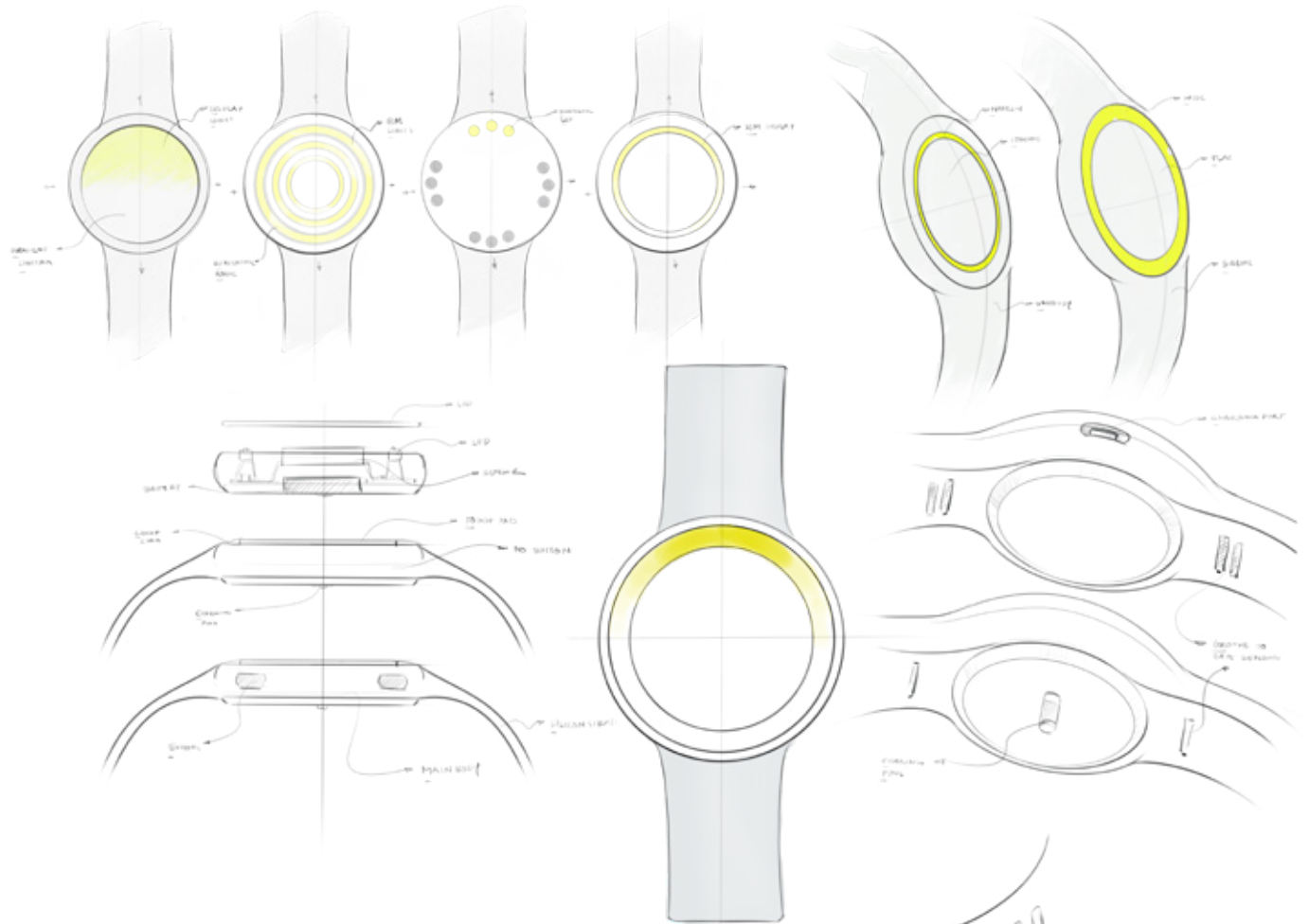
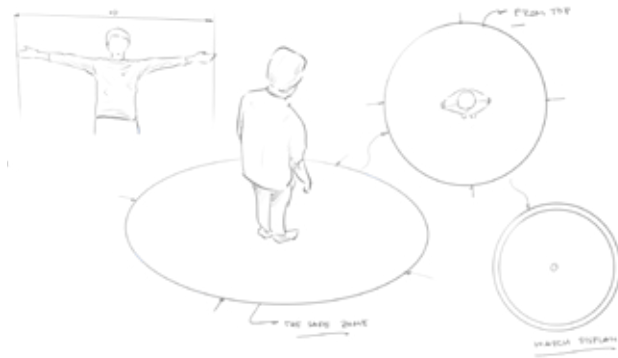
Certainly there are two areas of intervention, one is **controlling the rate of spreading** and other is invention of a cure. As a designer i preferred the first area as it will be wise to leave the later part for the doctors & medical professionals.

The way our government is controlling the rate of spreading is through **Social distancing** or **physical distancing**



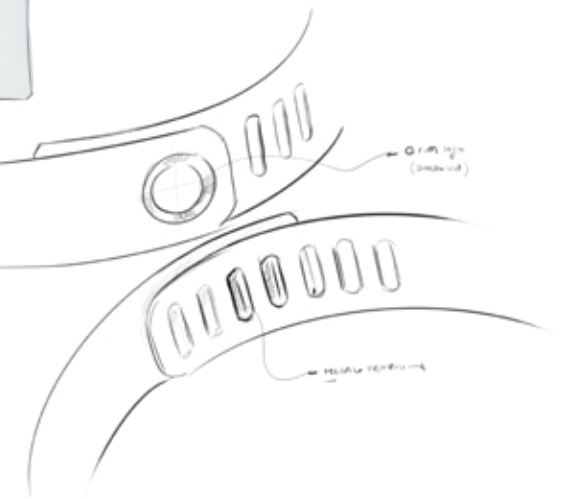
This is effective but **not possible to maintain everywhere**, so through this project an approach has been made to cater this problem.

The concept

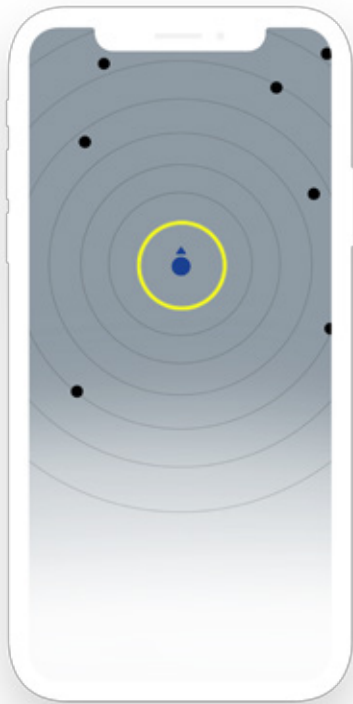


No it's not a smart-watch or a fitness band

It's a wearable **real time Geo fencing sensor and indicator**. It houses a wifi, gps & rfid unit, in combination of these three it creates a virtual boundary around user. If there is a probability of violating someones boundary or if the user is entering a crowded place it will blink and vibrate showing the respective direction of interference. The top part is kept clean without adding watch-faces or similar electronics parts for minimum signal disturbance and maximum signal receiving.



How it works



It creates a virtual **real time Geo fencing web**

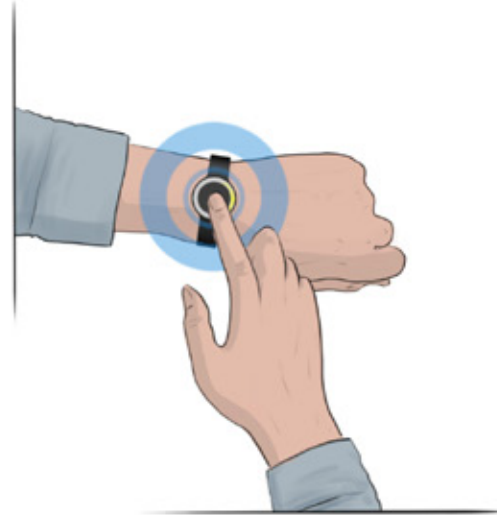
Comes with a **companion app**. Which can be used for location tracking. It will show other users in the map. It will also help to white-list known people and it will help in identification of effected zones.

Directional led and vibration indicates the distance. **If two people wearing bands comes close to each other** it will start to blink and vibrate in that direction for both. If the distance increases again to the safe limit the alert will stop.

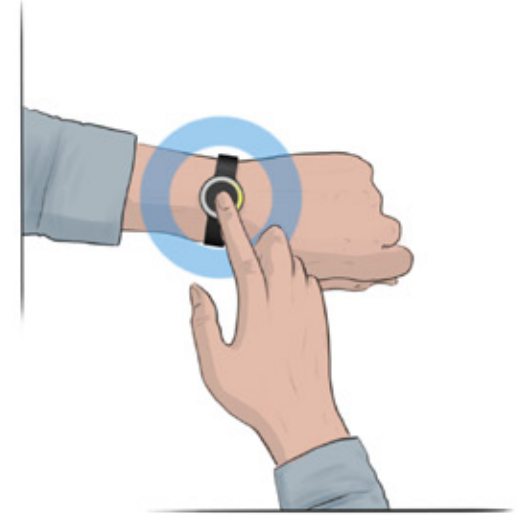




Long press to power on /off



Double tap to pair with mobile



Single tap to pause/standby





