

INCEPTION

Video: [Click here to view the video](#)

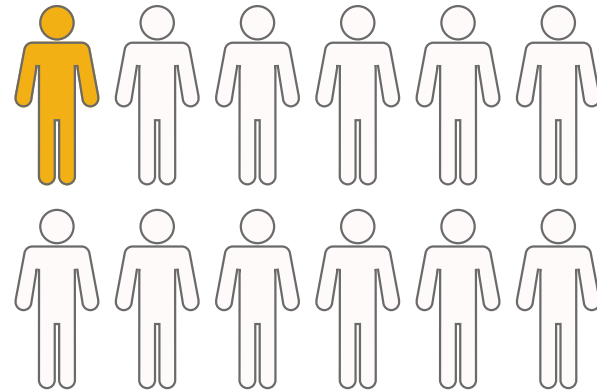
~~Color Blindness~~

Color Vision Deficiency (CVD)

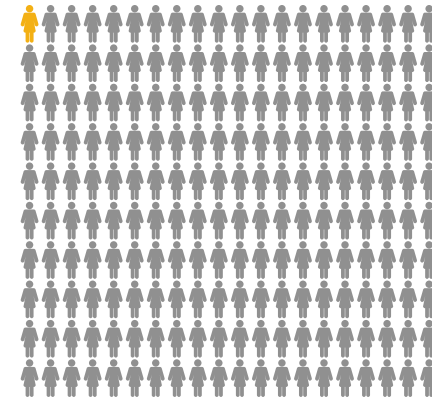
- Difficulty to distinguish between some color shades
- Changes with the darkness or lightness of the light
- Non cureable as it is genetic disorder
- Cannot be fixed by any surgery
- Less aids or color corrector available in market



Color Blind Demography



1/12 men
are colour deficient



1/200 women
are colour deficient



99%

of all colorblind people
are not really color blind
but **color deficient**



300 million

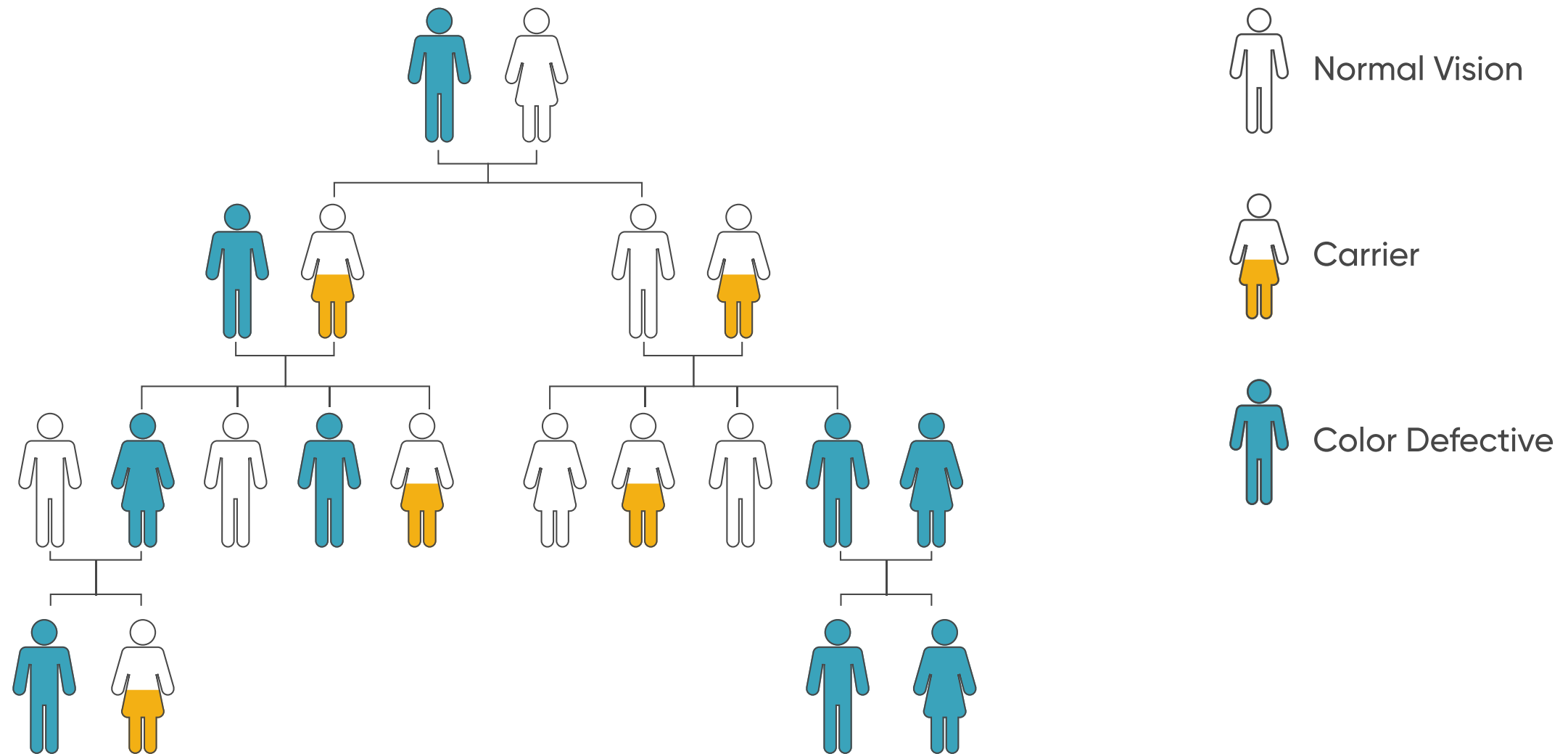
people approximately
in the World are
colour deficient



99%

of colorblind people are
suffering from **red-green**
color deficient

CVD Inheritance Pattern

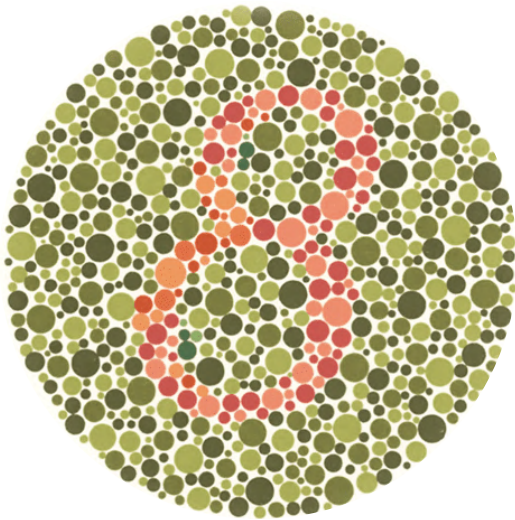

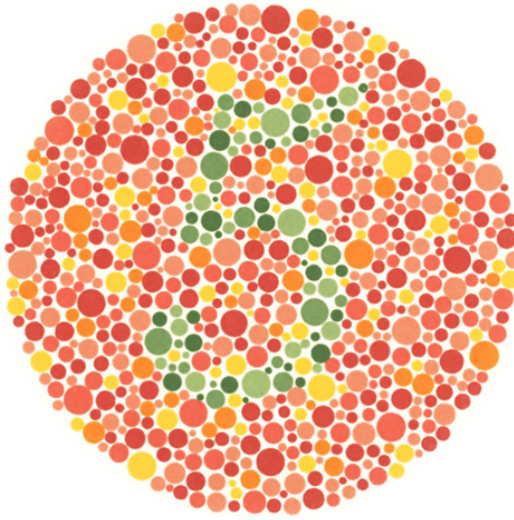


Woman can be a **carrier** of a 'gene' but she won't be colour blind.

There are many such scenarios where **parents would be unaware of color blindness.**

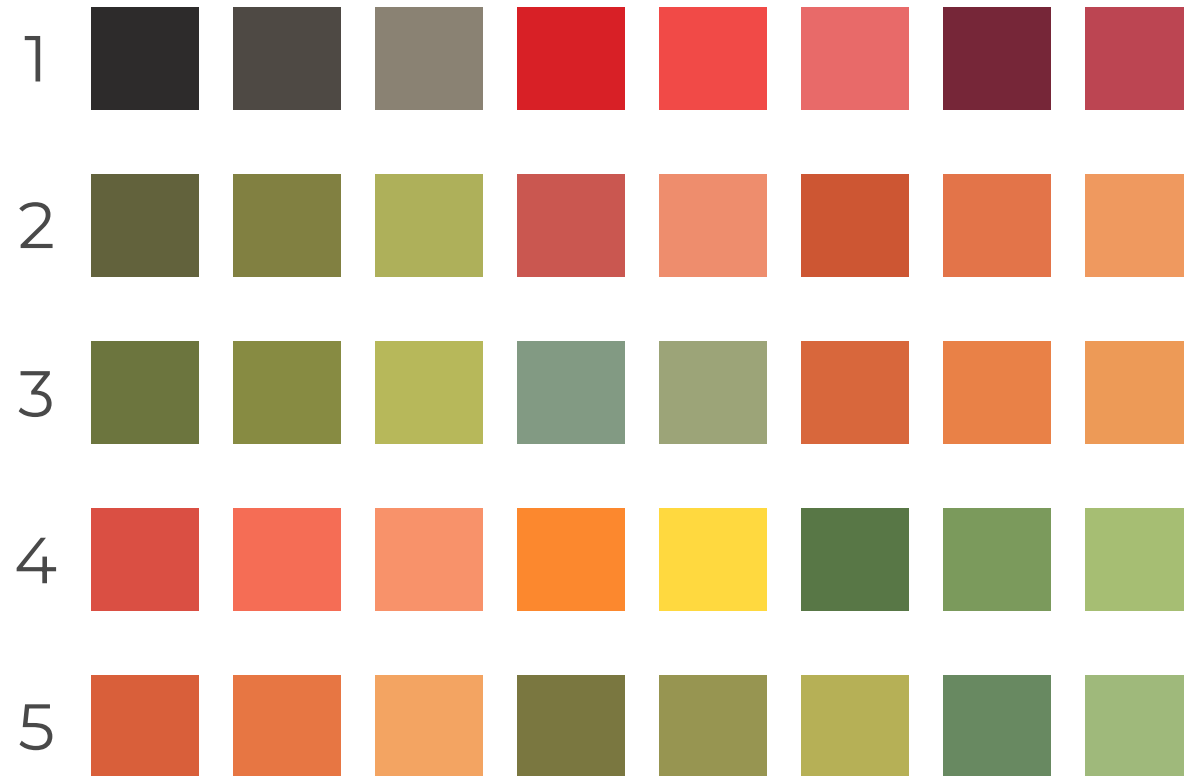
Ishihara Test

Test used universally to find if a person has any kind of color deficiency

Ishihara Plate			
Normal eye	8	96	5
Color Deficient eye	3	9	blank

CVD Inheritance Pattern

A survey was conducted for the CVD patients to understand their color perception.



Confusion Colors

Following color pair appears same to the CVD patients:



User Survey Insights



Daily Tasks

People with CVD do not face problem to conduct daily tasks



Color Shades

They get confused when multiple color shades are together



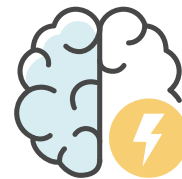
CVD Acceptance

They get job in small scale private companies only



Social Inequalities

Inequalities are faced during job, marriage & education quota



Awareness

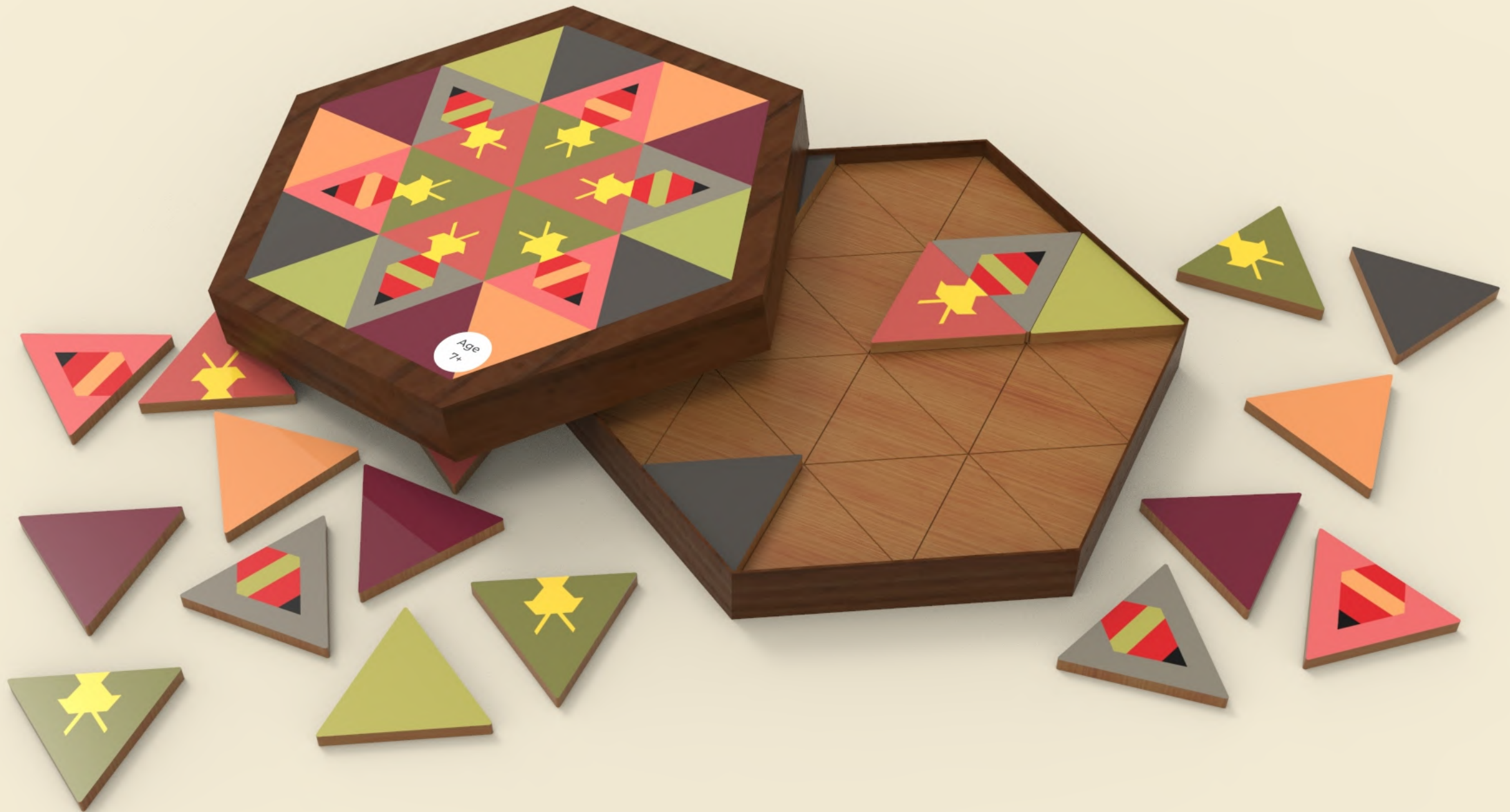
Maximum people are aware of their CVD after medical test



Depression

Get depressed, have suicidal thoughts after CVD detection

Solution



Arrange the triangular pieces according to the reference image provided.

Solution



Validate the arranged puzzle with reference image.

Solution

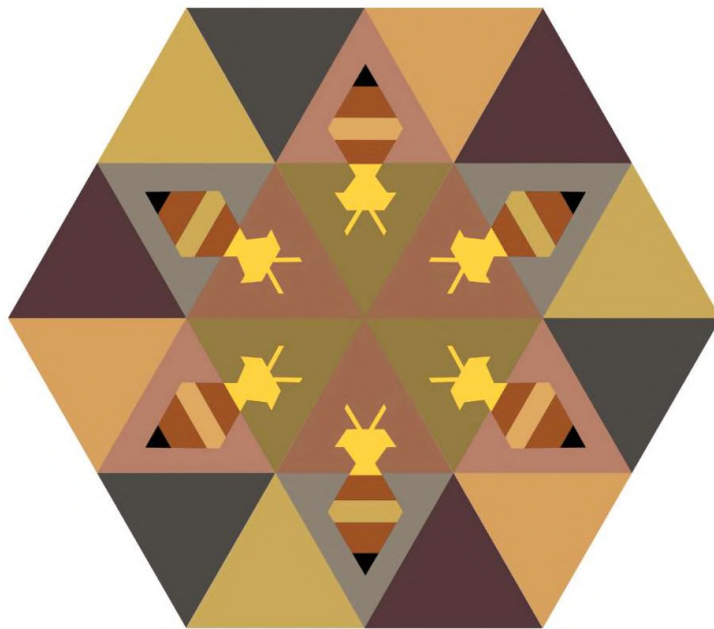


Back view

Front view

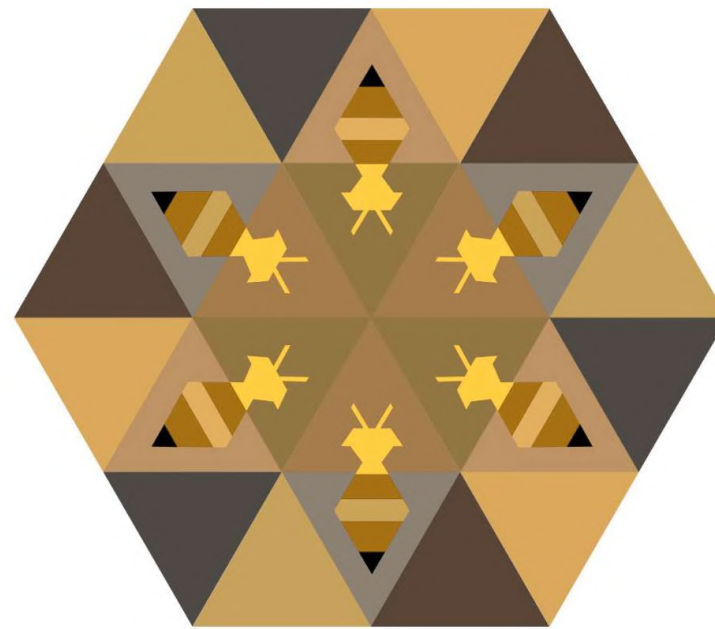
If the arranged puzzle differs from original, ask the child to check the puzzle and parent can check the CVD chart.

How CVD people see



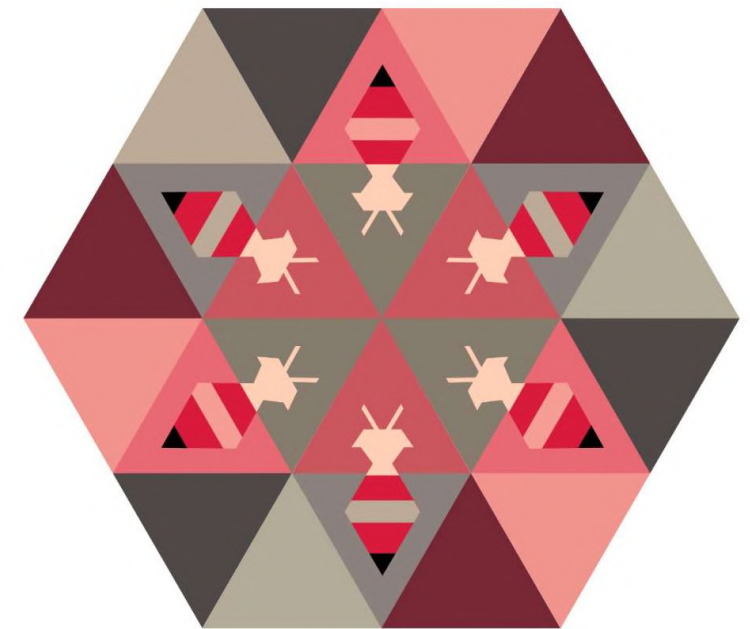
Protanopia

Red looks more like green i.e. eye is less sensitive to red light



Deuteranopia

A type of red-green color deficiency i.e. eye is less sensitive to green light



Tritanopia

A blue-yellow color deficiency, people confuse blue with green & yellow with violet

How game will help

People with CVD would make errors in arranging the pieces.

With the help of this puzzle, parents can be made aware of their child's color deficiency.

We can help the people to get a better life and have better career options.

This might be used as a doctor's kit to check on the kids in a fun way.



Thank You



Lovish Bandwal



Pranoti Sonawane