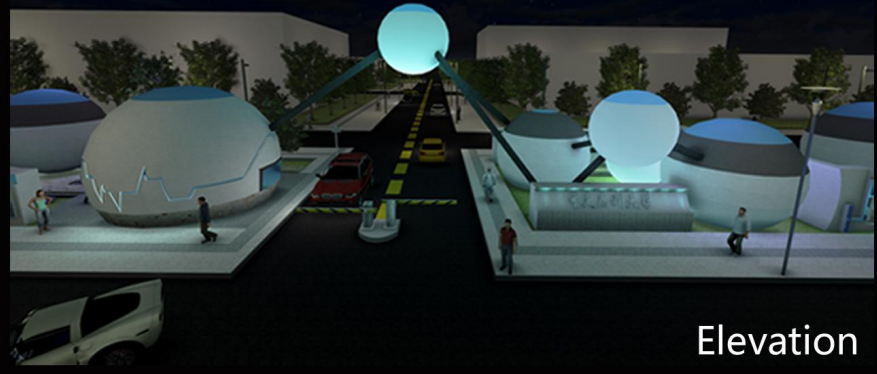
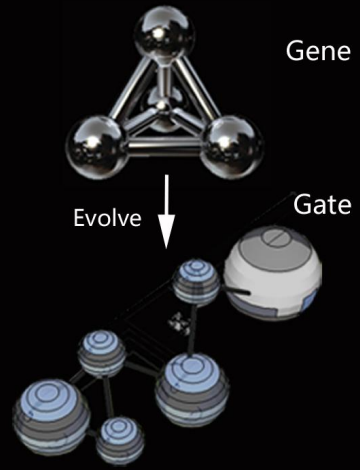


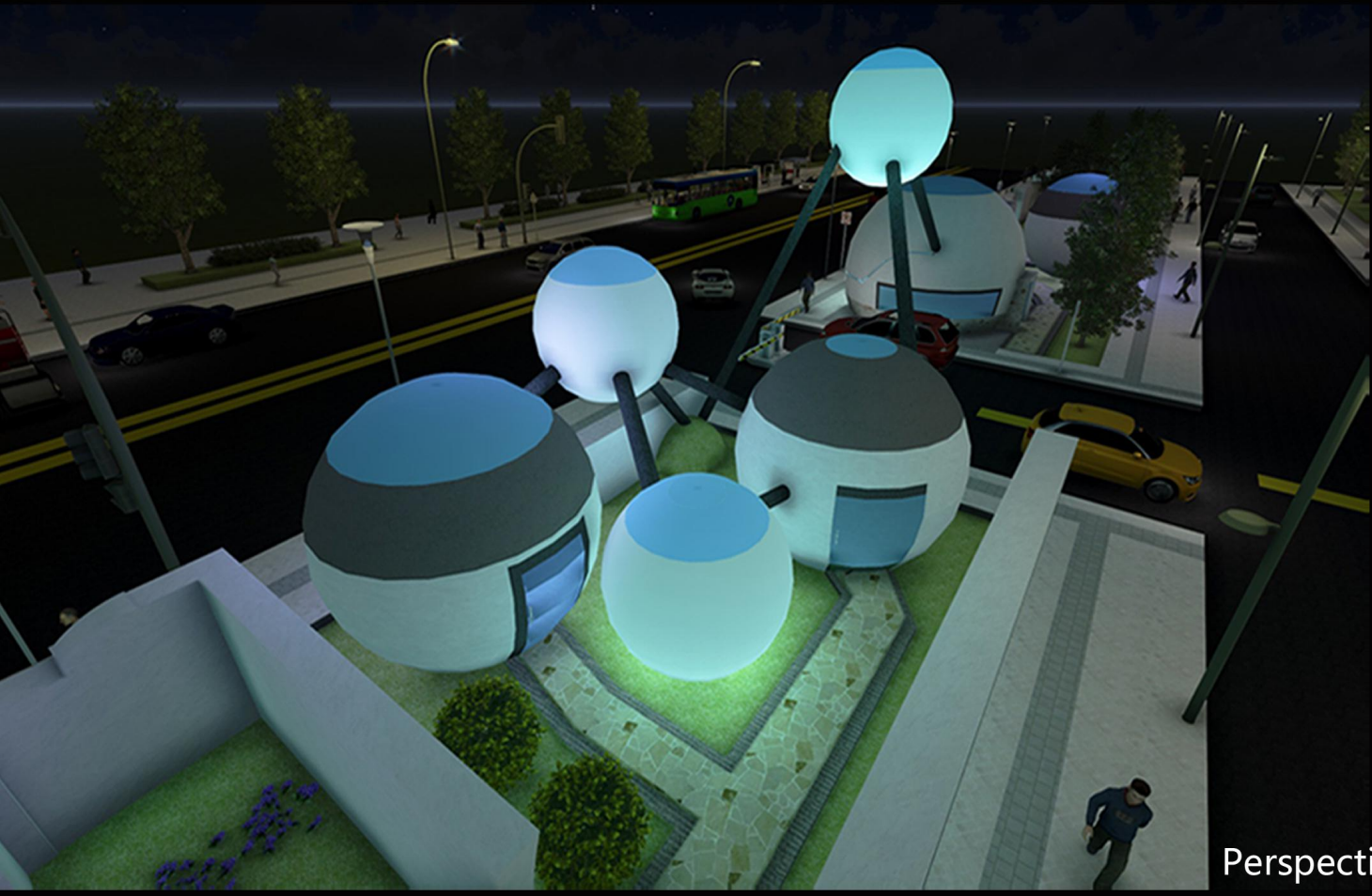
Lighting Design 01



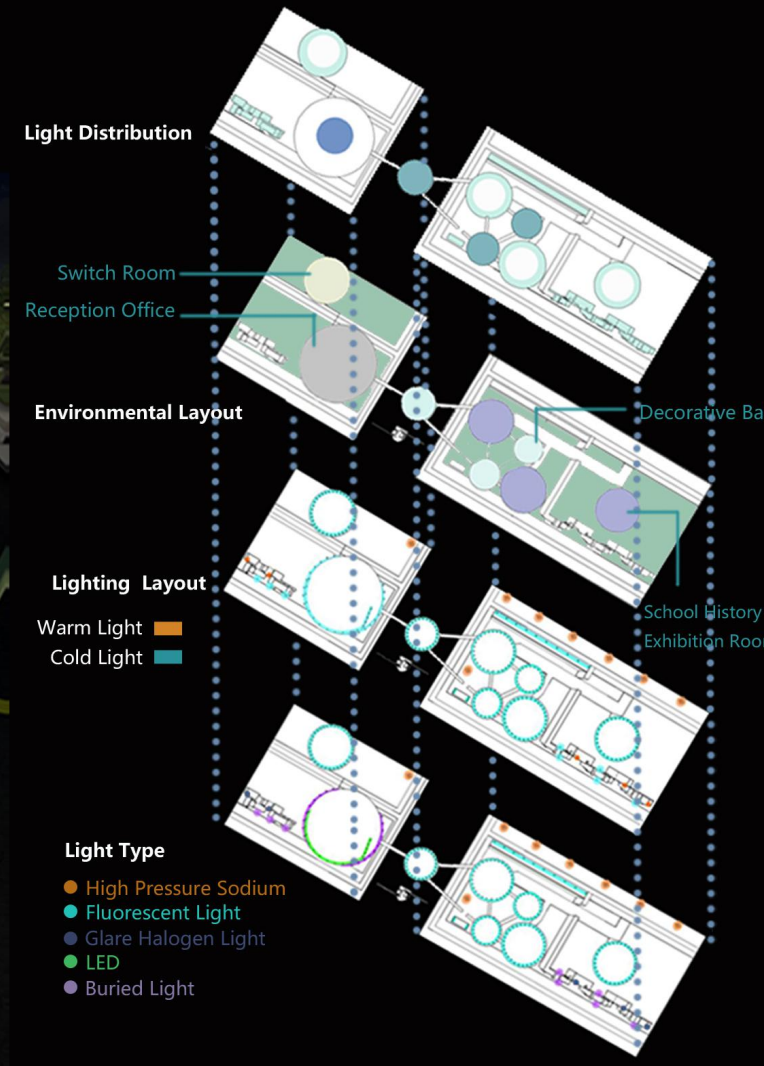
Elevation



The program actually contains the design of lighting and school gate, it focuses on the east gate of Chongqing Medical University as a planning space. The design aims are strengthening the regional characteristics of gate and reflects the cultural essence of the university. The gate is inspired by gene model, and it shows a sense of Medical University of Science and Technology. As a part of the university, it not only has symbolic effects, but it also has corresponding practicality. On the other hand, due to the diverse lighting types, lighting and materials all make the gate more unique and compact.



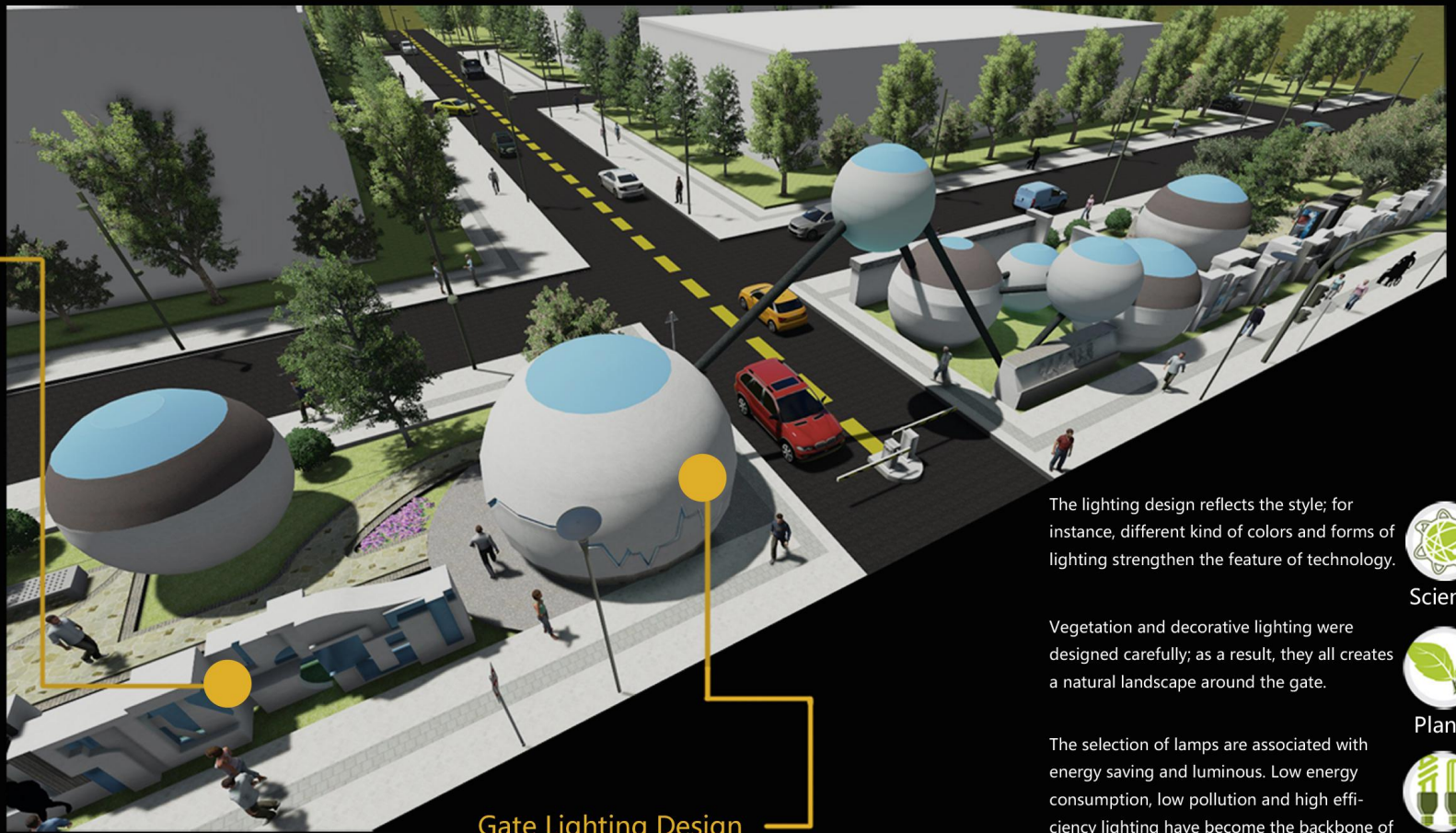
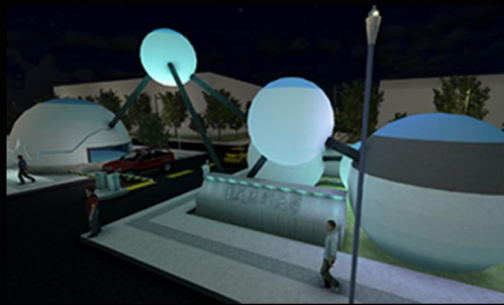
Perspective



Lighting Design 02

Wall Lighting Design

As the core of peripheral walls element, cultural identity becomes the subject of the walls' lighting. The local lighting ensures the rest function, and it also expresses the cultural connotation of the walls.



Gate Lighting Design



The university historical display area is the main structure, and it occupies an important geographical position. The lighting layout strengthens its dominant position and creates a comfortable lighting environment.

- 1. Accent Lighting
- 2. Transitional Lighting
- 3. Weakening Lighting

The lighting design reflects the style; for instance, different kind of colors and forms of lighting strengthen the feature of technology.



Science

Vegetation and decorative lighting were designed carefully; as a result, they all creates a natural landscape around the gate.



Plants

The selection of lamps are associated with energy saving and luminous. Low energy consumption, low pollution and high efficiency lighting have become the backbone of lighting design.



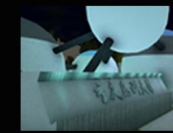
Lamps

To ensure harmonious regional lighting, avoid light pollution, create individualized and beautiful gate environment are the basic points in this design.



Sustainability

The concept of sustainable is related to light rendering, lamps and other aspects of choice.



Reflected Light



Background Light



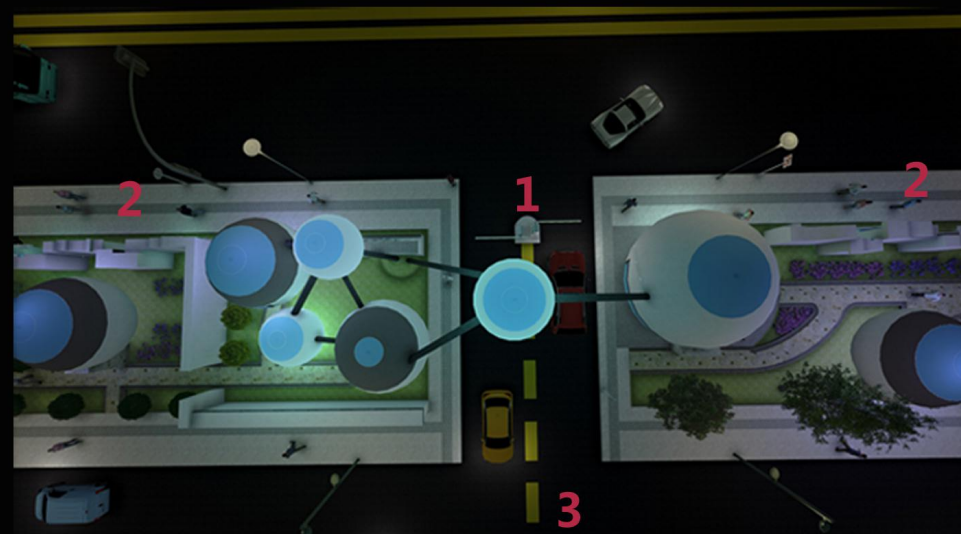
Inside Light



Inside Translucent

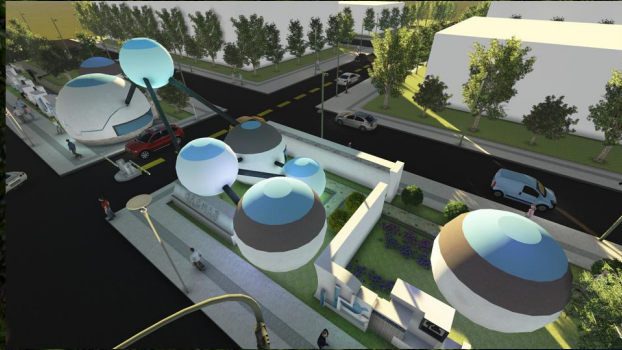


Inner Glow



Lighting Design 03

Space Perspectives

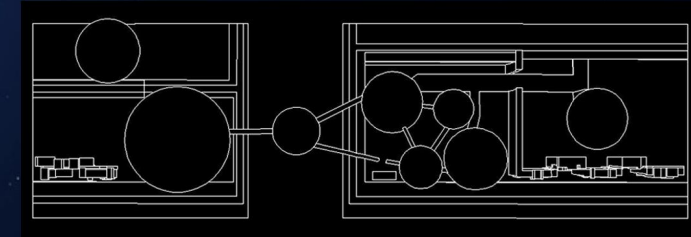


The design of project form is obvious and attractive. For example, the new design of the gate refers to the form of biological genes, and the form elements of the cultural wall comes from the medical tools. Through specific design renderings, the sense of space form can be displayed from the perspective of site plan, section elevation and perspective effect.

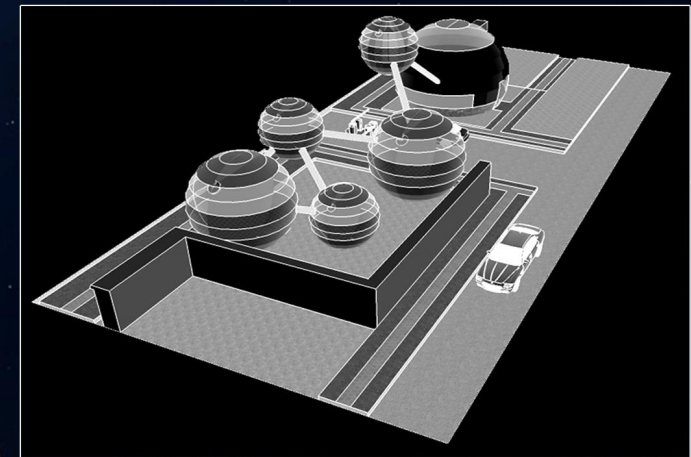
In the aspect of lighting design, the design of the main foil space design form. In terms of function, lighting design is related to the lighting function and design decorative. In the project, the sense of science, technology and the imitation of nature become the most obvious feature in the project design.



Section Elevation of Space Wall



The Draft Plan of Space



The Design Concept Picture of Project



Head-up Perspective of Gate