

olobo

makes your period
experience amiable !

Ramna Verma & Sahithi Chamalla
National Institute of Design, Assam

Initial problem areas

Unpredictable period arrival which leads to spotting

Dealing with painful cramps

Leakage and stains

Disposing remains a task

Need of replacing pad at regular intervals



Talked to 35-40 menstruating women aged 17-25 yrs to understand the problem areas better

Insights from the survey-

Placement of the pad, feeling shy and experiencing anxiety/shock were the most common observations at the time of menarche

Majority of the women are concerned about their menstrual health and this implies that women might find it helpful if they could seek information when something unusual happens

To avoid stains and overcome unpredictable nature of a period, a pad is put in advance and this would lead to pad wastage

The process of disposing is uncomfortable for many as the material to wrap a pad is not always available, dustbin to dispose is not always available, pad 's packaging is not efficient

Major factors causing discomfort during periods are cramps, washing undergarments and the process of disposing

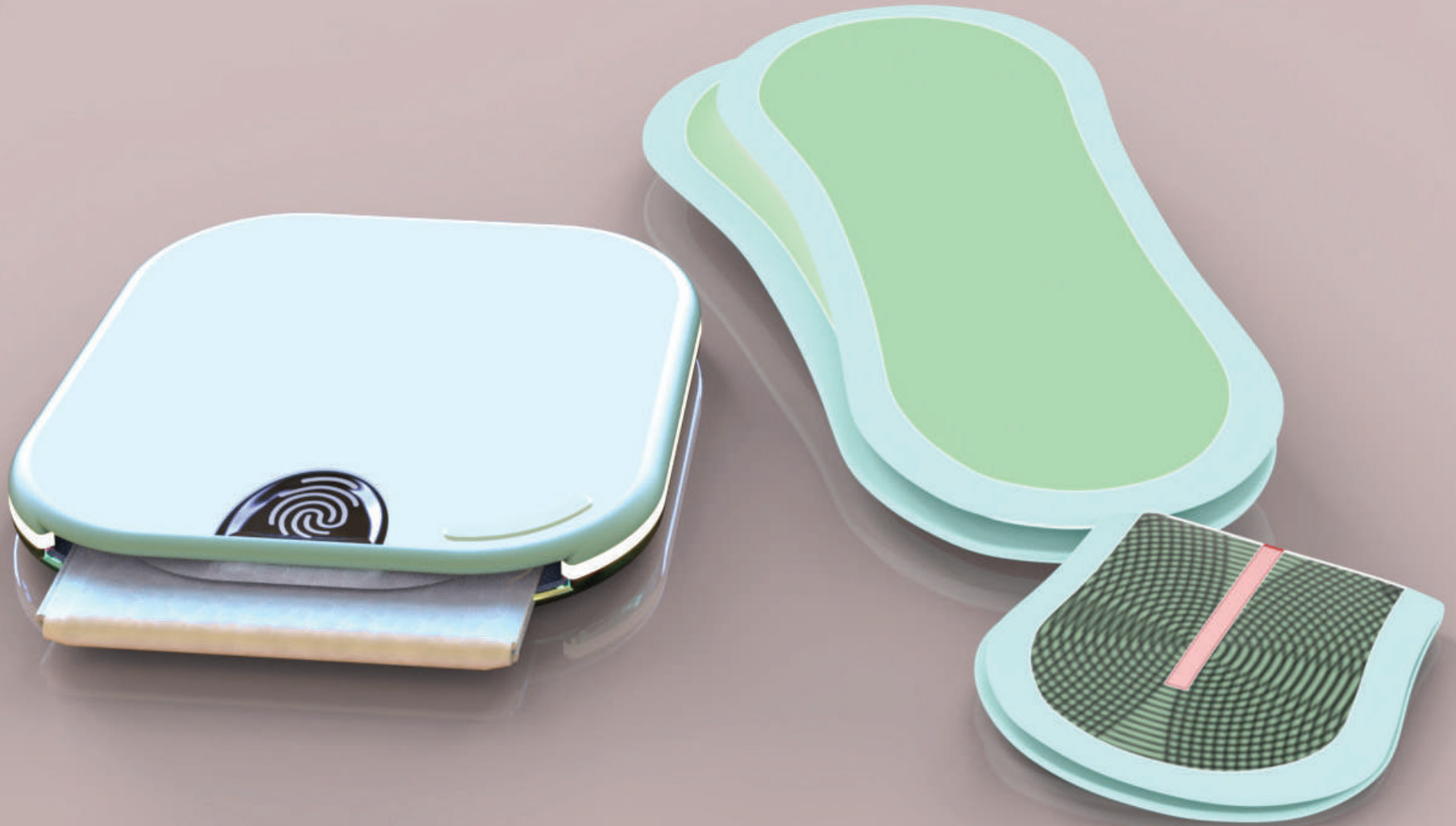
Almost all the women said that the most comfortable product is sanitary napkins because it is easy to use as one just has to place it on their undergarment and doesn't have to insert anything like incase of other menstrual products

Other challenges included stains, mood swings and difficulty in disposing while travelling

brief

An artifact that makes the period experience amiable

olobo



smart tracker & biodegradable pads



what is olobo?

smart tracker

Smart tracker will collect the required data with the help of color sensor and basal body temperature sensor. This will enable one to know the essential information regarding periods.

Tracker comes with a pocket-friendly case which displays the information that can only be accessed with the user's fingerprint.

&

bio-degradable pads

Bio-degradable pads have a ph-indicator strip that shows the amount of blood absorbed in the pad; smart tracker will sense the required information from the ph strip.

Olobo pads come with patterns and attachments which will make sure that the pad is properly sealed and disposed of in the right way.



case stores data
informs user



tracker collects data

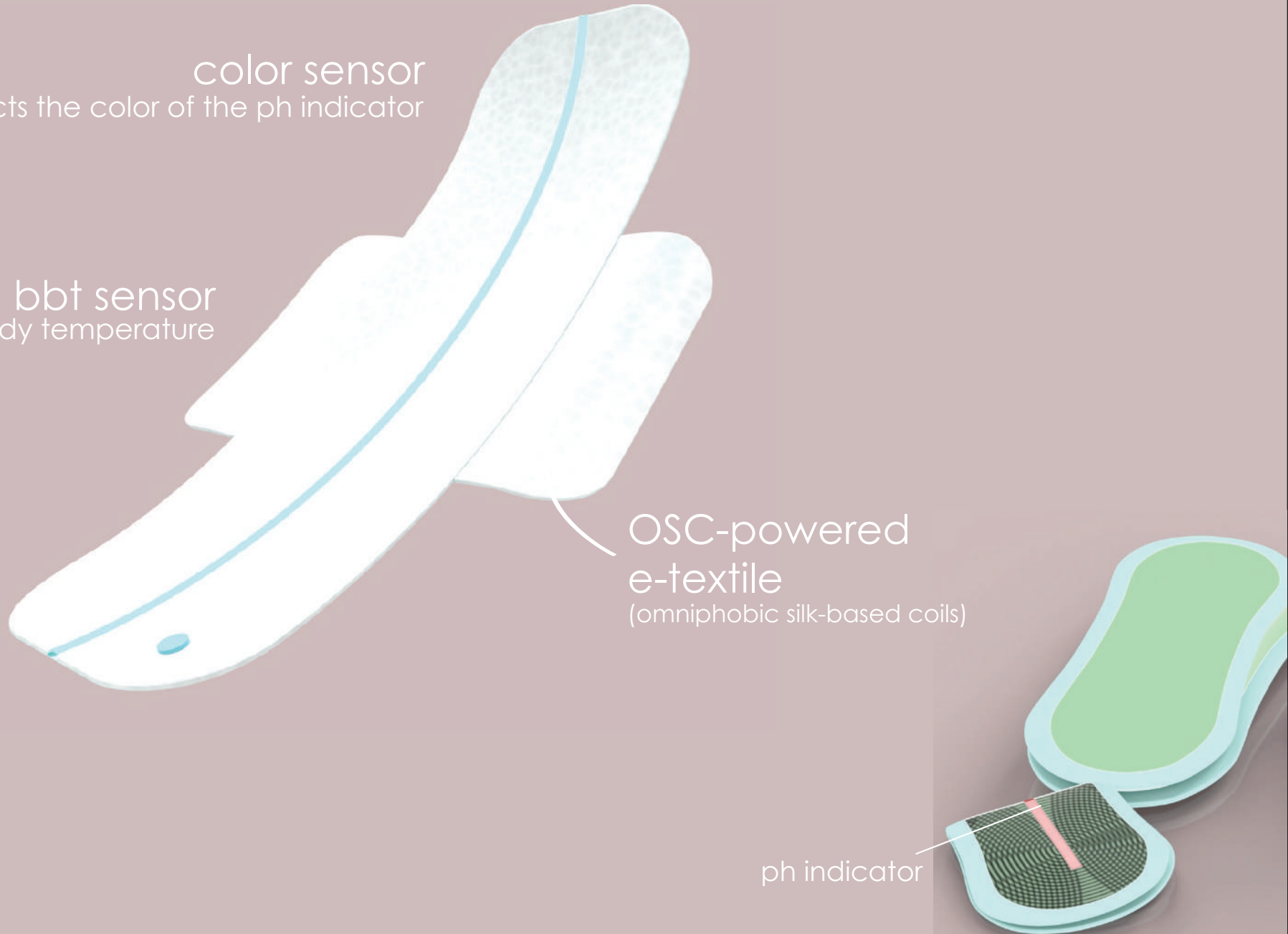
smart tracker

color sensor
detects the color of the ph indicator

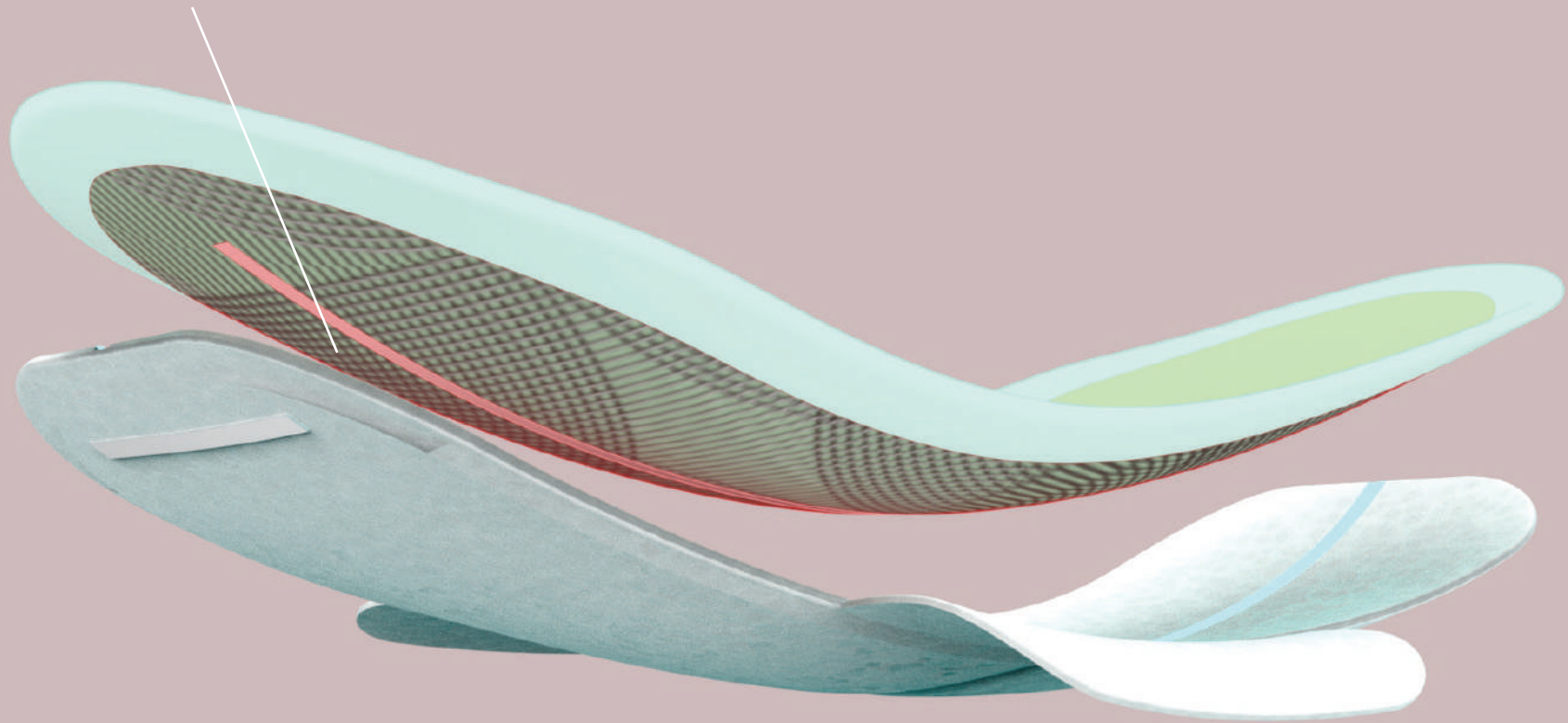
bbt sensor
detects basal body temperature

OSC-powered
e-textile
(omniphobic silk-based coils)

ph indicator



ph indicator displays the quantity of the blood



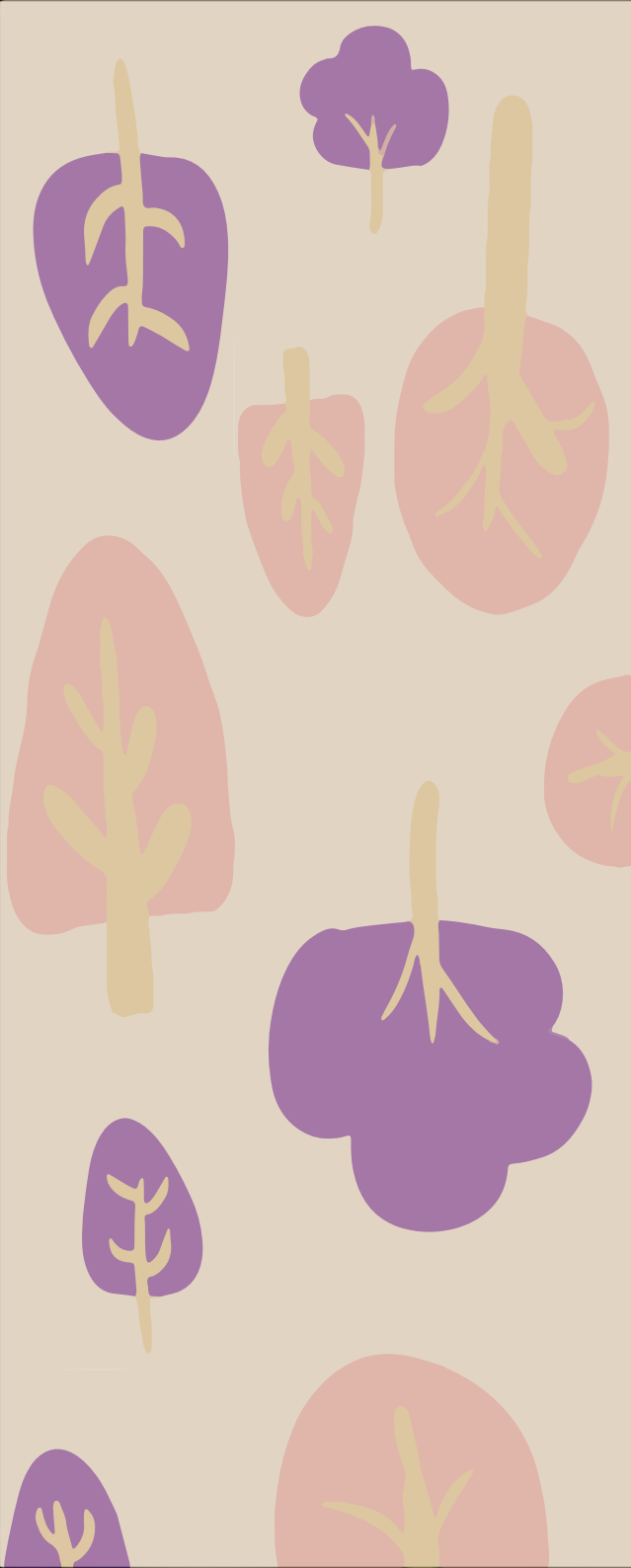
data is collected by the tracker through ph strip when pad is placed on it

Smart tracker comes with **storage** for 2 extra pads.

One can be placed on the tracker, adding upto 3 pads which are roughly sufficient for a day.

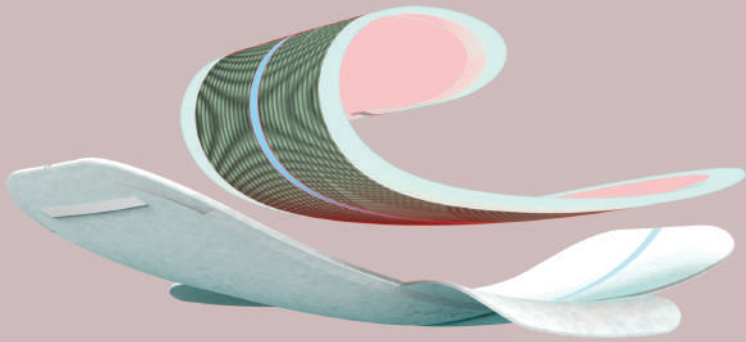


no hassle
of carrying
extra pads

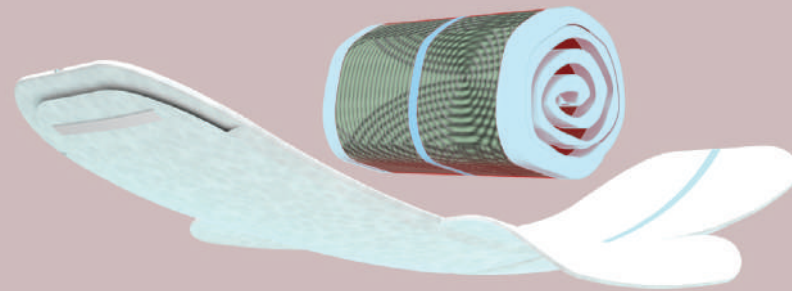


The pad contains patterns at the backside. Attachments are also provided for sealing it properly from the ends.

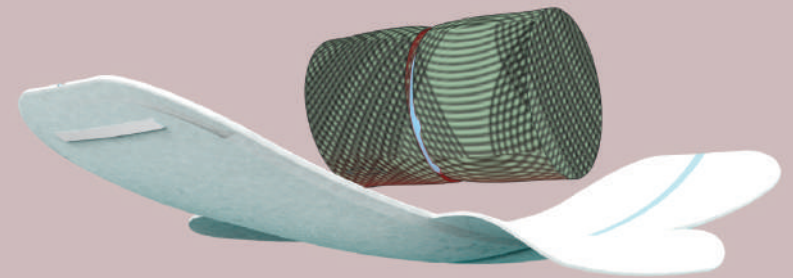




used pad can be rolled
and disposed of directly



no need of carrying
an extra newspaper
to wrap a used pad



smart tracker is **washable**
breathable
bio-degradable



olobo

makes your period
experience amiable !